



IrrigationCaddy

KGCONTROLS LLC

IrrigationCaddySniffer

User Manual

5/7/2012

This document explains how to use the IrrigationCaddySniffer utility.

The IrrigationCaddySniffer utility is used to discover IrrigationCaddy (IC) devices on a computer network. When the utility is started a message is sent to the network, and if an IC is on the network, the IC will respond with information about itself.

The IC response includes the “IP Address”, “Hostname”, “MAC Address”, and “Additional Info” if any.

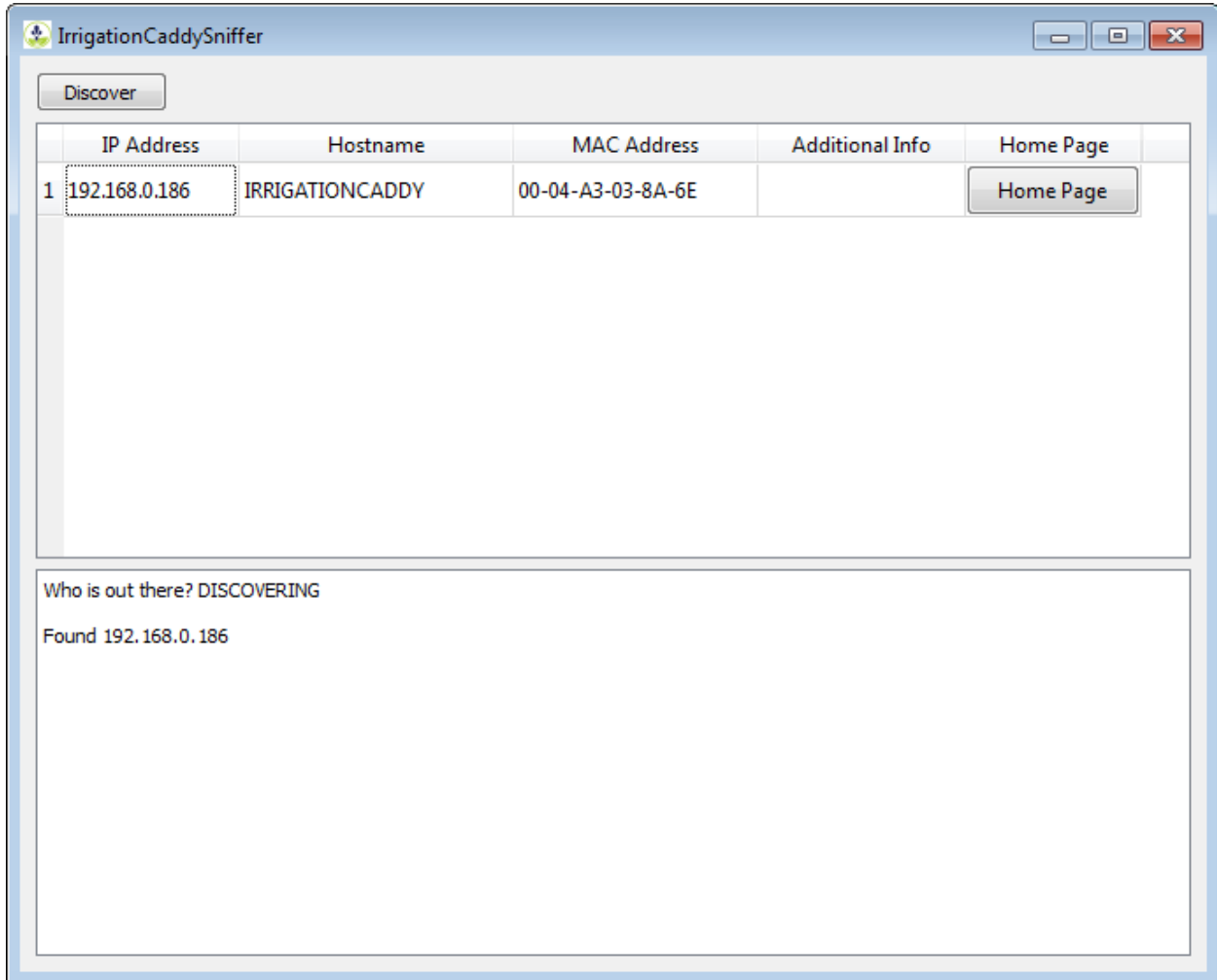


Figure 1 IrrigationCaddySniffer Main Window

The “Discover” button also causes the utility to actively look for ICs on the network.

While idle the utility will also listen for messages from the ICs. An IC would send a message every time it boots up; so if the utility is on while the IC is rebooting the user would see activity on the IrrigationCaddySniffer window.

Clicking on the “Home Page” button causes the IC home page to be opened on a Web Browser.