



IrrigationCaddy

Web Based Irrigation Controller

Firmware Upgrade Instructions

IMPORTANT: A firmware upgrade will likely cause the schedule programming, zone names, networking settings, etc, to be erased or modified. Make note of your settings before upgrading so that you can go back to them after the upgrade. Also it is recommended that you reset the unit to factory defaults once the upgrade is complete.

Table of Contents

Irrigation Caddy	1
Web Based Sprinkler Control System	1
Firmware Upgrade Instructions.....	1
Firmware Upgrade	3
Steps:.....	3
Troubleshooting	14

Firmware Upgrade

Steps:

1. Make sure the IrrigationCaddy device is powered off.
2. Download the Firmware from the IrrigationCaddy website at <http://irrigationcaddy.com> and put it in a directory on your system. The firmware comes packaged as a zip file, you will have to unzip the file onto your system.
3. From the IrrigationCaddy website, download the Firmware Upgrade Utility (http://irrigationcaddy.com/docs/ENC_Loader.zip).
4. Once downloaded, unzip the "**ENC_Loader.zip**" to a directory on your windows system.
5. Open your Windows Explorer, and navigate to the location where you unzipped the utility

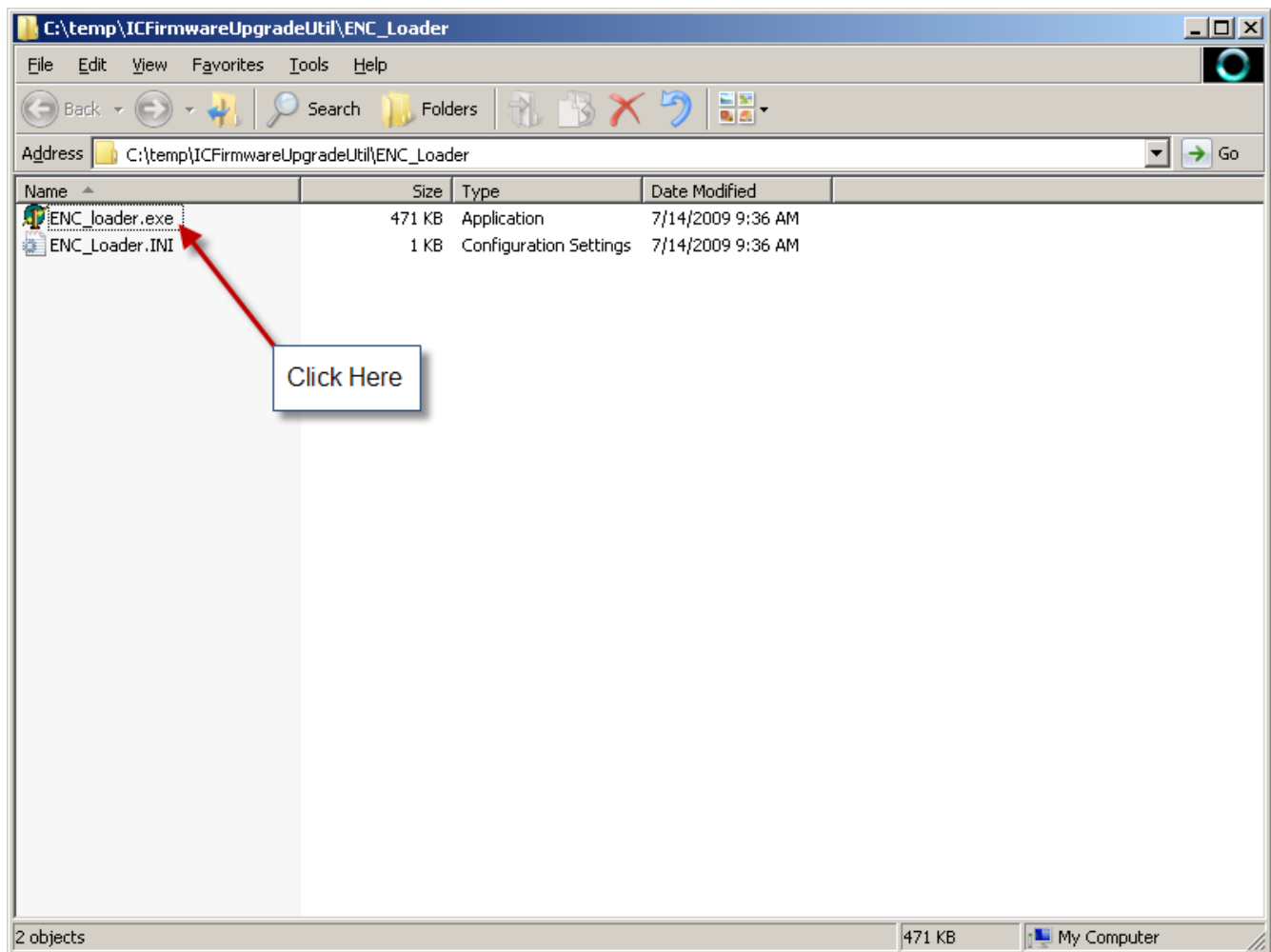


Illustration 1: Run the Firmware Upgrade Utility

6. The firmware upgrade utility will open. Then click on the "**Capture Target**" button.

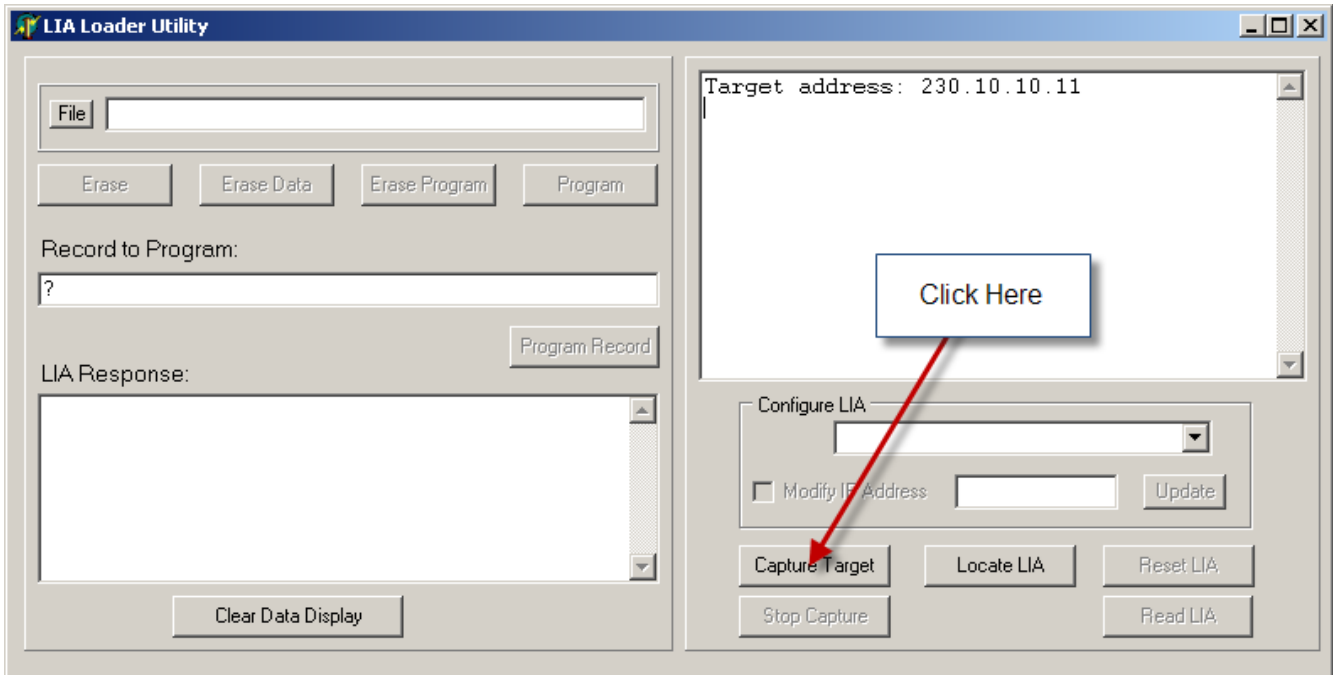


Illustration 2: Capture the device for programming

7. Power the IrrigationCaddy device ON. The firmware upgrade utility should detect the device, and capture it.

NOTE: If the device does not show up make sure the Windows Firewall is not on. If it is turn it off while doing the upgrade, then turn it back on.

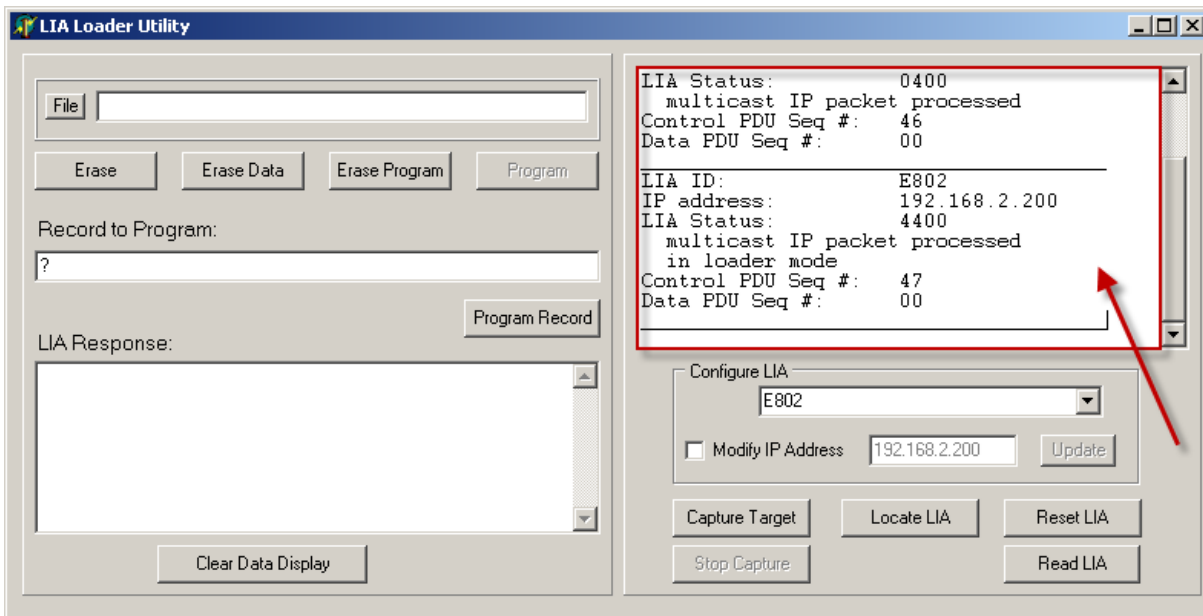


Illustration 3: Status changes when the device is captured

8. Click on the “**File**” button, and navigate to the location where you have stored the firmware

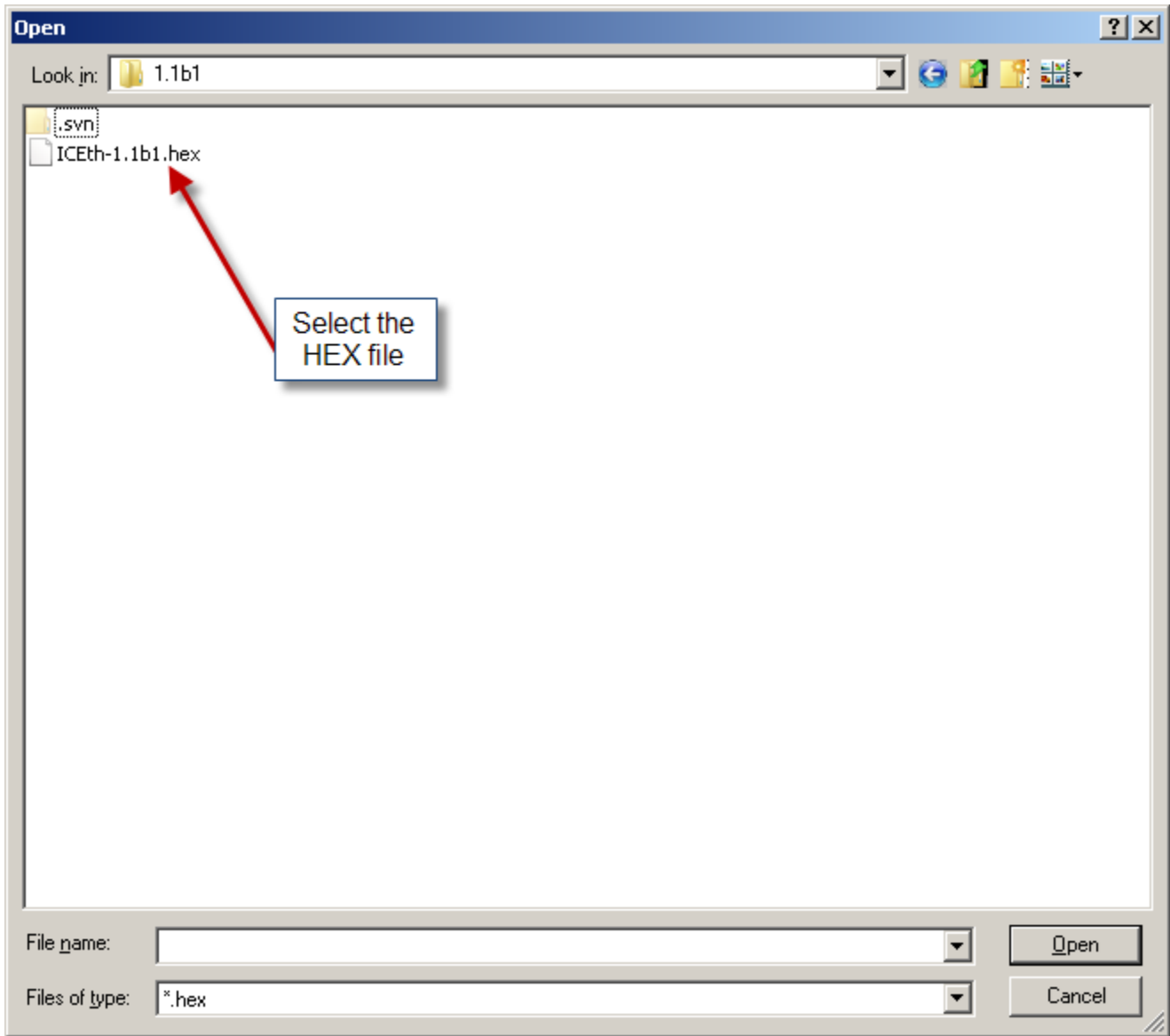


Illustration 4: Firmware HEX file

9. Once you have select the desired firmware file, click on the “**Program**” button.

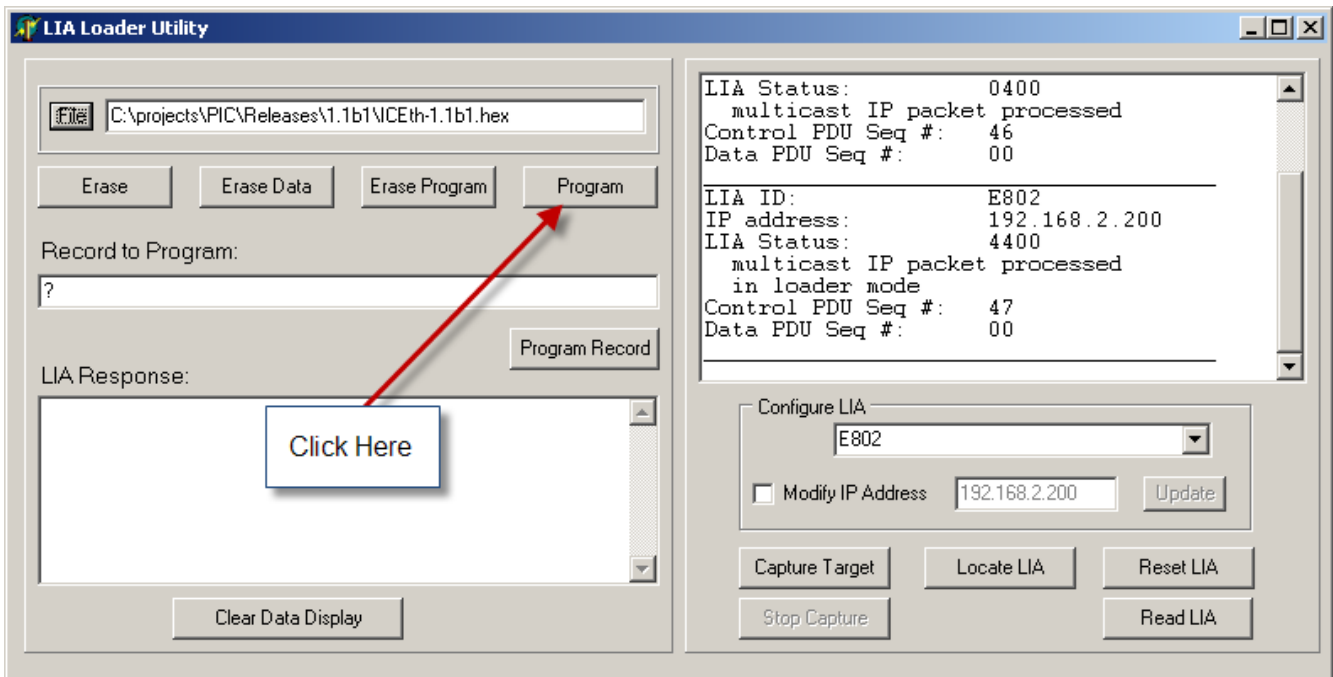


Illustration 5: Program the device with the new firmware

10. You will see the title bar flash with status information. Once finished programming, the status window will indicate so.

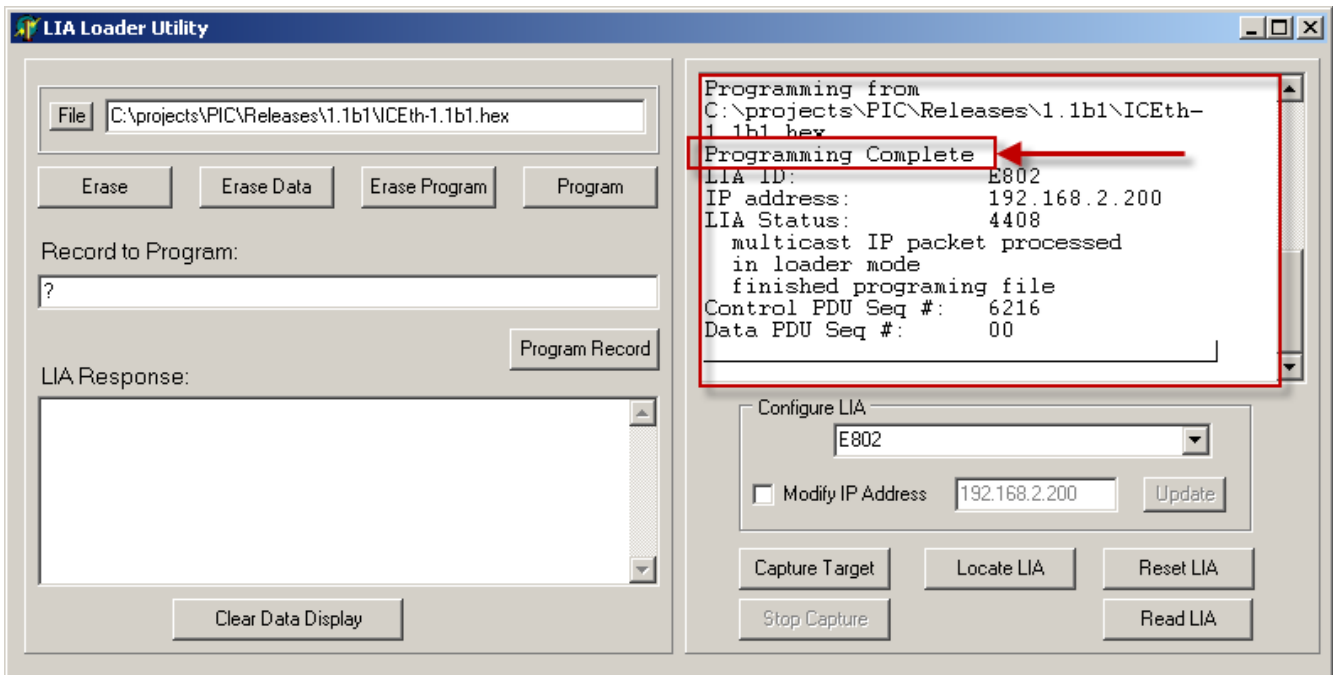
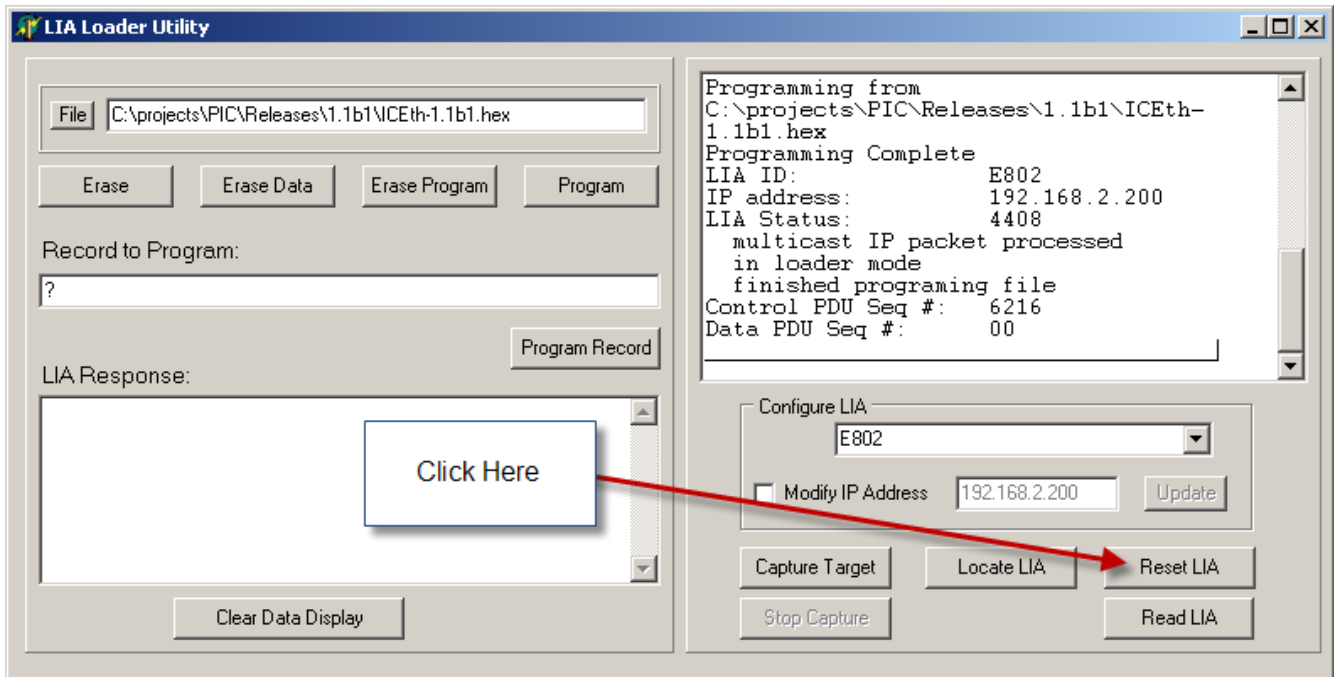


Illustration 6: Status changes when the Device has been successfully programmed

- At this point the device has been reprogrammed, and you can release the device by clicking on the “**Reset LIA**” button, or closing the firmware upgrade utility.



- Depending on the firmware you are uploading, the user interface files might also have to be upgraded. To do so, make sure the device is powered ON. Then go to <http://irrigationcaddy/mpfsupload>

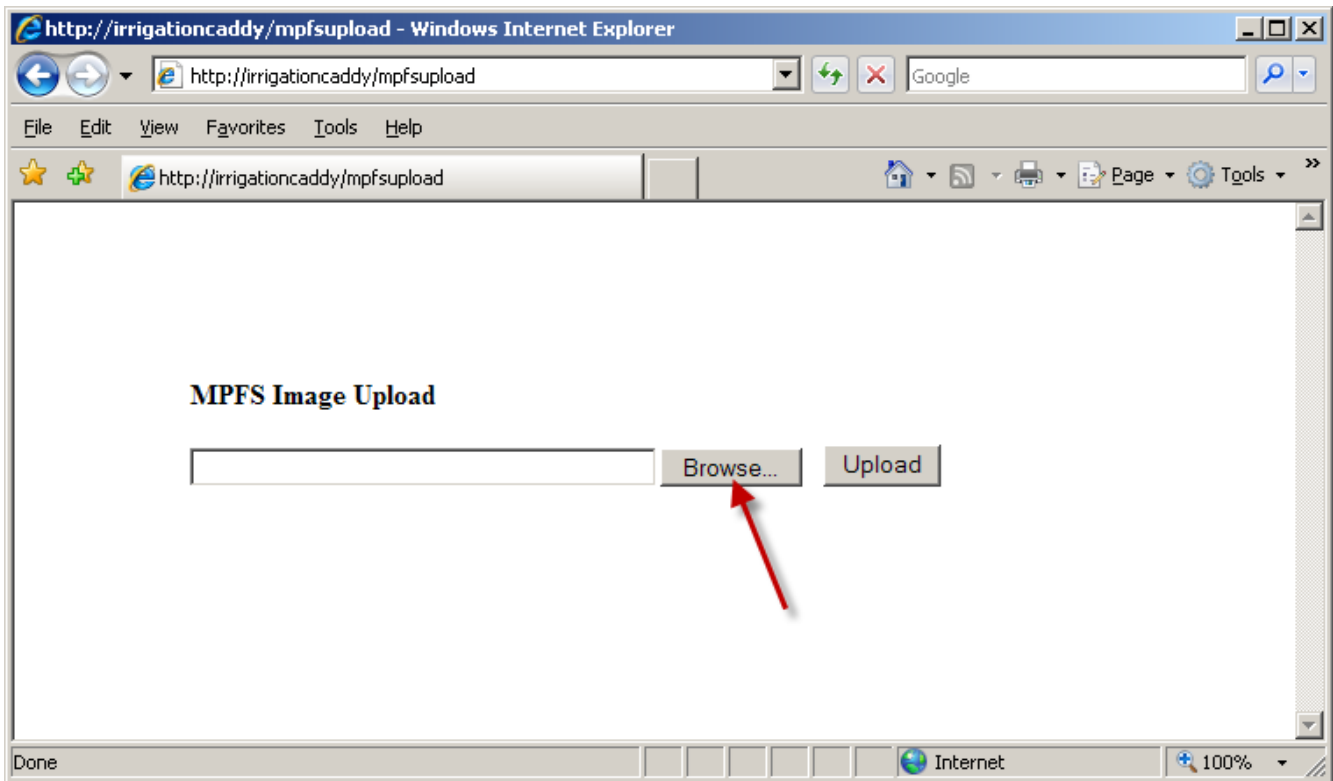


Illustration 7: User interface upload

13. Use the "**Browse**" button to navigate to the user interface file location. The user interface file comes bundled with the firmware file, and it has a ".bin" extension.

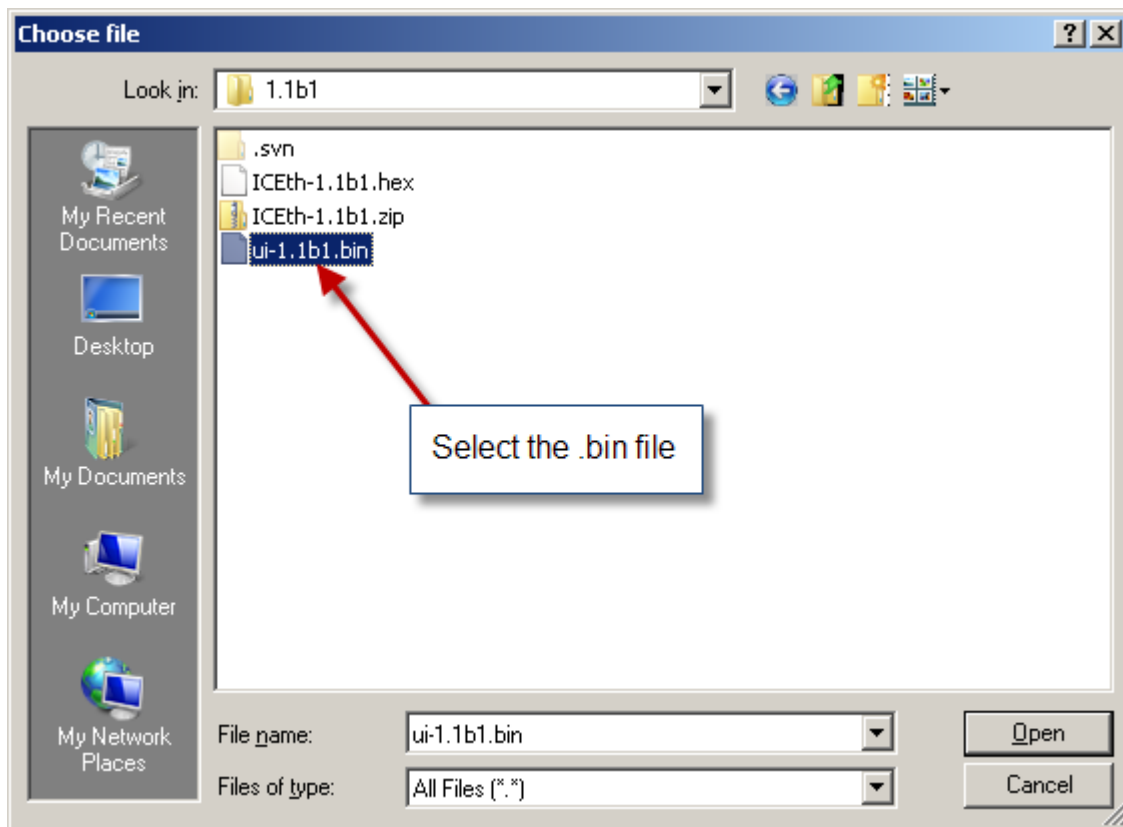


Illustration 8: Select the user interface upgrade file

1. Click on the "**Upload**" button.
2. Once uploaded, close the browser and start a new browser to test the changes. (this is not required, but it will clear the cache, therefore showing the new user interface).

Troubleshooting

- If after the firmware / User Interface upgrade the device behaves erratically (i.e the web pages do not render properly, or you get numbers running across the screen) follow the following steps.

1. Turn the device power OFF, then ON again
2. Open a new browser, and enter the following URL:

<http://irrigationcaddy/index.htm?reset>

NOTE: A "**reset**" would cause your scheduling information to be lost, and all zone times will be reset to zero

3. If you still have issues, try reuploading the user interface file (the .bin file) by going to:

<http://irrigationcaddy/mpfsupload>

- The device does not respond to <http://irrigationcaddy> anymore
 1. Open a DOS prompt from the computer you are trying to access the IC device, and type the following:

```
nbtstat -R
```
 2. Now, open a new browser and try again going to <http://irrigationcaddy>. If that does not work, try using the IP address.

- The windows firewall is OFF, and the utility is still not capturing the unit.
 1. After pressing the Capture button make sure you reboot the unit by taken the power off the unit, and reapplying it.
 2. If the caddy is installed behind a wireless bridge, the bridge might be preventing the caddy from being captured. Connect the caddy directly to a router or a switch while you do the upgrade, and then put it back in its place.